

CASE STUDY:
GOKAK MILLS

MODERNIZING WAN
IN MANUFACTURING

About Gokak Mills

Gokak Mills, Shapoorji Pallonji group company was established in 1885. Gokak mills caters to worldwide markets for quality yarns.

Forbes Campbell Knitwear (Divison of Gokak Textiles Limited.) is designed as downstream integration to add the value to yarn produced by Gokak Mills. With their reputation as yarn spinners well established, the mills have diversified into dyed yarns, canvas, terry towels, knitted garments and other downstream products.

The world is Gokak mills market with its product well accepted in more than 35 countries besides India. Approximately 50 % of the current output is exported directly.

The Network Challenges

Applications were hosted in the datacenter in Gokak, Karnataka. Users from 5 branch office locations accessed business applications using VPN over internet links.

As the solution was based on traditional UTM device in the central location, with site-to-site VPNs in few branch offices and remote VPNs for other offices, it was a challenge to support end-users and business demands due to the following reasons:

➤ **TIME TAKEN TO TROUBLESHOOT ISSUES AND ACTIVATING NEW POLICIES DUE TO COMPLEXITY OF NETWORK AND CONFIGURATION, THOUGH IT WAS ONLY 6 LOCATIONS**

➤ **LACK OF SUPPORT FOR CENTRALIZED CONTROL, MANAGEMENT AND MONITORING**

➤ **NON-AVAILABILITY OF INSIGHTS AND ANALYTICS OF NETWORK AND APPLICATIONS, WHICH AFFECTED THE USER EXPERIENCE AND SLAS FOR ENTERPRISE APPS.**

The Consequences of Legacy Network



Impact on WAN

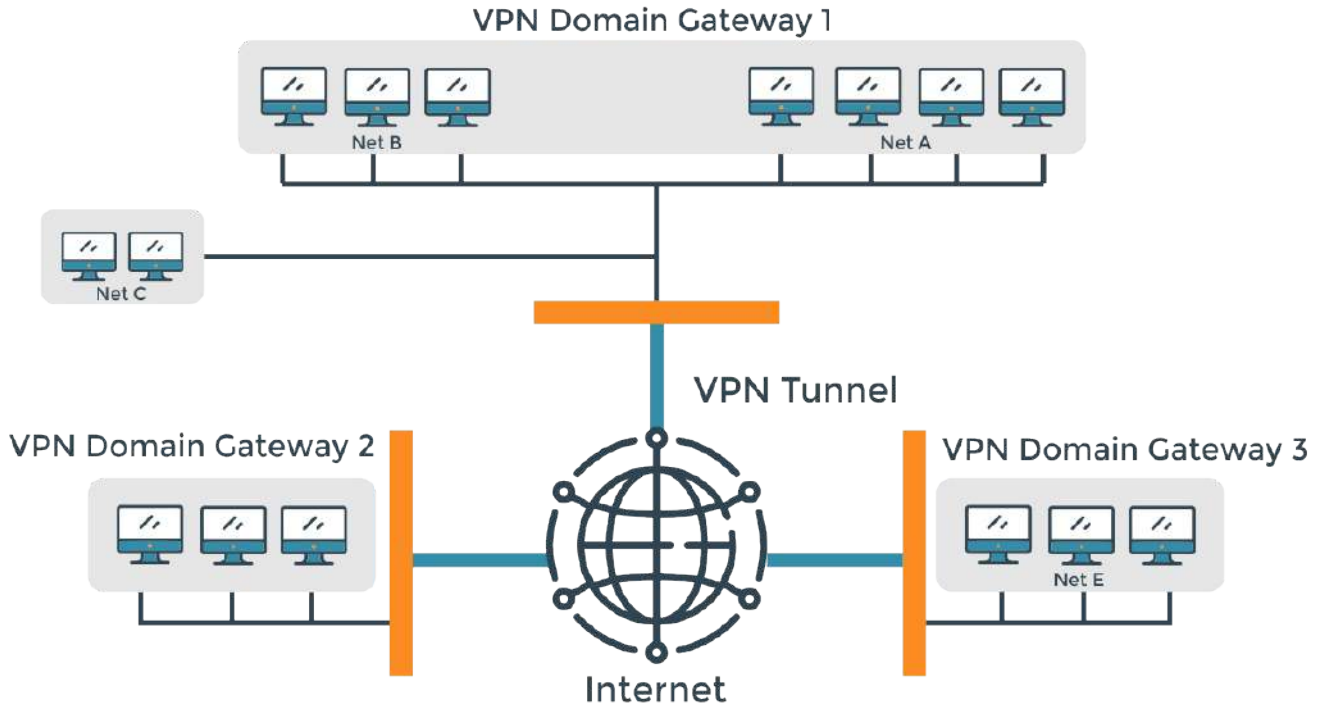
- Zero Visibility to Network
- High latency
- Intermittent Broadband issues
- Policy Implementation became an Issue



Impact on IT

- Poor user experience and SLAs
- MTRR was Higher as IT network engineers took time to discover and troubleshoot issues.
- IT teams spend most of the time analyzing the cause which resulted in less productivity
- Managing and monitoring locations across India became complex.

Gokak Mills Topology:



The Solution



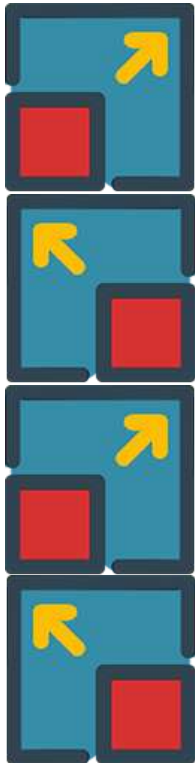
CloudPort

CloudPort 100M branch Gateway device was installed at each of the Gokak Mills' spoke site and CloudPort at Datacenter as the Hub site.



CloudStation

VCPe was installed at the data center as the hub site CloudPort. Considering all business units of Gokak Mills as a single network VCPe-100M instanced as HUB.



The Solution

- **CloudStation** deployed as a service from the Cloud
- **CloudPort** deployed at the Branch, Data Center enabling the SD-WAN functionality
- **CloudPort** acts as an edge gateway/router at the branches
- Deployed in the **Enterprise Private Data Center**
- **Plug 'n' Play** at the Branch, Centrally Managed & Controlled



Lavelle Networks SD-WAN met the unique needs of Gokak Mills. It fulfilled all network requirements.

In no time, Lavelle Networks SD-WAN helped Gokak Mills to scale its applications (and network) without worrying about performance. **Post SD-WAN, Gokak Mills reported bespoke end user experience and drastic improvement in App SLA.**

The Result

CloudStation being delivered and consumed as a service from the Cloud, drastically lowered CAPEX and OPEX for the company.

Managing and monitoring is no more complex. Backed with cloud based centralized management, the IT team can now take a granular view of the networks.



Business

Reachability is not a problem. Engineers can sit in a central location and access the device.

- Easier to scale
- Faster Delivery
- Superior Customer experience
- Bespoke user experience



WAN

- Plug and Play
- Load balancing
- High levels of bandwidth and latency improvements.
- Prioritizing traffic
- Reduced Latency with smooth and quick fix to spurts of latency
- Reduced cost as compared to MPLS
- Seamless failover, Local breakout, and secure AWS traffic.
- PPOE on device to reduce the need to manage two devices.



IT Team

- Granular visibility to network via network analytics
- Ease of maintenance
- Reduced number of tickets and users commenting on the great improvement of the network experience.
- IT Managers are spending less time troubleshooting and configuring manually things that are now automated
- Real time alerts and notifications to monitor better
- Centralized Controller



Top Global enterprise brands are using Lavelle Networks SD-WAN platform for upgrading their infrastructure to next generation WAN and hybrid WAN Solutions.

- **2000 node deployment in 2 weeks**
- **Large e-commerce networks**
- **Top Insurance providers**
- **Large retail networks**
- **Top rated financial institutions, government networks, law and order, healthcare.**

CONTACT US

Speak to our experts

Web: www.lavellenetworks.com/contact/

Email: sales@lavellenetworks.com

"As SD-WAN disrupts traditional networking vendors, Lavelle Networks has made a mark in India, picking up large customers in retail and insurance" - **Gartner**



WWW.LAVELLENETWORKS.COM

Copyright © 2019-20 Lavelle Networks Private Limited. All rights reserved.

No part of this publication may be reproduced, transmitted, transcribed, stored in a retrieval system, or translated into any language, in any form or by any means, electronic, mechanical, photocopying, recording, or otherwise, without prior written permission from Lavelle Networks Private Limited.

All copyright, confidential information, patents, design rights and all other intellectual property rights of whatsoever nature contained herein are and shall remain the sole and exclusive property of Lavelle Networks Private Limited. The information furnished herein is believed to be accurate and reliable. However, no responsibility is assumed by Lavelle Networks for its use, or for any infringements of patents or other rights of third parties resulting from its use. The Lavelle Networks name and Lavelle Networks logo are trademarks or registered trademarks of Lavelle Networks Private Limited.

All other trademarks are the property of their respective owners..